

Issues and Challenges for Imaging in Proton Radiotherapy

Philip Evans,
Centre for Vision Speech and Signal Processing,
University of Surrey

NPL PPRIG Proton Therapy Physics Workshop March 2014

Need for Imaging in Proton Radiotherapy

- Correction patient model
 - Set-up positioning
 - Anatomy model in treatment planning system
- Correct dosimetry
 - Dose distribution
 - Beam energy and profile
 - Range measurement

How to Image

- Projection radiography
 - kV X-ray of treatment portal
 - Proton beam
- Tomograph
 - X-ray kVCT
 - pCT
- Beam monitoring
 - Beam penumbra imaging
 - Range in phantom
- Interaction of patient with beam
 - In-vivo dosimetry approach

Challenges of kV Imaging and Stopping Power

- Relationship between x-ray and proton attenuation?
 - H or μ/ρ (120 keV) \Rightarrow S/ρ (150 MeV)?
 - Spectral effects?
 - Look-up table
 - Stoichiometric approach – effects of H content
 - Dual energy CT
- Protons
 - Still need to extrapolate
 - S/ρ (high MeV) \Rightarrow S/ρ (150 MeV)

Proton Radiography

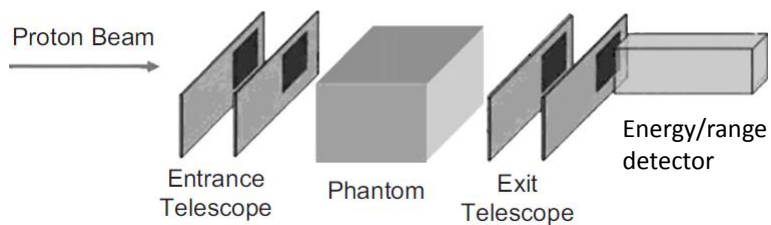
- Image high energy protons passing through patient
 - Integral of stopping power
 - Halo effect – scattered radiation
- Need to correct for scattering artefacts for high spatial resolution

Proton CT

- Needs data to satisfy CT requirements
 - Multiple angles encompass object extent
 - Broad beam and gantry?
- Proton interactions v. photon interactions
 - Photons travel in straight lines and either pass through or are absorbed
 - Protons scatter and almost always pass through but with distorted path

Proton CT

- Protons scatter and almost always pass through but with distorted path
 - Need to track path and measure energy
 - Range telescope concept



Proton CT

- Entrance and exit telescope measure path and position of each proton
- Energy/range detector measures energy
- Combine for CT reconstruction

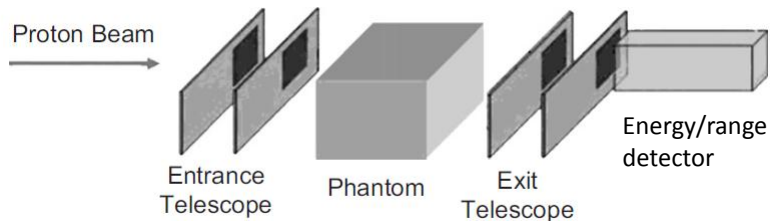
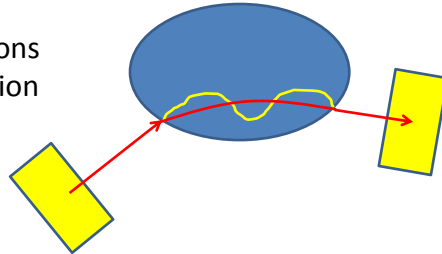


Image Reconstruction

- Protons do not travel in straight lines
 - Estimate path of protons for image reconstruction
 - Cubic spline
 - Most likely path
 - Others?

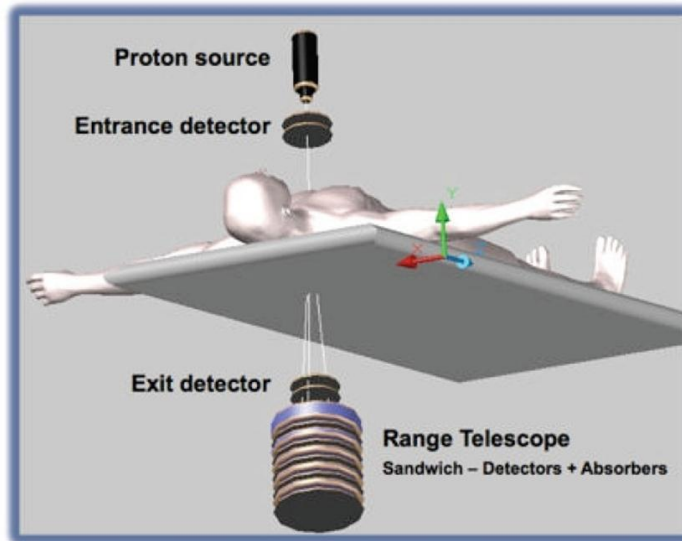


Proton CT Approaches

- Paul Scherrer Institut
 - Tracking: fibre hodoscope, Range: plastic scintillator
- Loma Linda
 - Tracking: silicon strips, Range: CsI calorimeter
- AQUA/ENVISION
 - Tracking: gas electron multipliers, Range: plastic scintillator
- PRIMA
 - Tracking: silicon strips, Range: YAG:Ce calorimeter

PRaVDA – Proton Radiotherapy Verification and Dosimetry Applications

– Integrated computed tomography and dosimetry instrument for proton therapy



Beam Monitoring

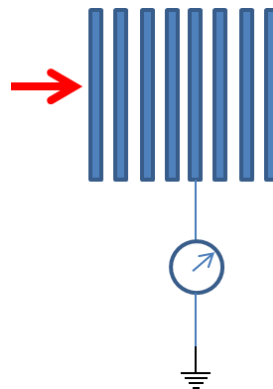
- Liverpool/Clatterbridge Solution
 - Array of strip detectors to measure beam halo

Range Uncertainties

- Proton radiotherapy accuracy relies on accurate knowledge of proton range
 - Statistics of range: Mean and spread
 - Variation with characteristics
- Measure with purpose built phantom
- Knopf and Lomax, PMB, **58**, R131, 2013

Multi-Layer Faraday Cup

- Measure beam range
- Faraday cup
 - Standard method of measuring charged particle beams
 - measure current in metal collector
 - Multi-Layer, stack of plates
 - Measure current at set of depths – energy information



Model of anatomy on Day of Treatment

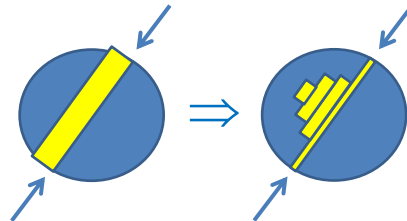
- Imaging on treatment set
 - Image guided radiotherapy
 - Adaptive radiotherapy
- Similar imaging challenge to x-ray radiotherapy
 - Many of the x-ray methods have been studied
- Proton imaging

Imaging Beam Interactions

- In-beam PET
 - EU Envision project
 - PET camera in treatment room
 - Detects positron decays from (p,x) reactions – fragmentation, evaporation

In-Beam PET

- First demonstrations of in-beam PET becoming available
- New imaging methods?
 - Time of Flight



Conclusions

- Imaging challenges in proton radiotherapy
 - Anatomy at treatment
 - Rad/tissue interaction
 - Beam characteristics
- Methods
 - Radiography
 - CT
 - Beam imaging
 - Dose deposition

Acknowledgements

PRaVDA

Surrey – Gavin Poludniowski

Lincoln – Nigel Allinson, Michela Esposito, Chris Waltham, Grainne Riley

Birmingham – Stuart Green, Tony Price, David Parker

Liverpool – Phil Allport, Jon Taylor, Gian Casse, Ilya Tsurin

Coventry – Spyros Manolopoulos

iThemba/UoCT – Jaime Nieto-Camero, Julyan Symons, Steve Peterson

ISDI Ltd – Thalys Anaxagoras

Aspect Systems – Marcus Verhoeven, Frank Laube